

# Specifications

# 240 Volt

Model	Pump Displacement	Free Air Delivery	Maximum Pressure	Pump	Motor Power	Power Supply	Tank Volume	Outlet Size	Noise Level	Dimensions (cm) & Weight			
	L/min [cfm] *	L/min [cfm] *	kPa [psi]	Model [rpm]	kW [hp]	Amps	Litres	BSP	dB(A) ^	L	W	H	kg
P13	255 [9.0]	170 [6.0]	1,000 [145]	PG15 [1,360]	1.65 [2.2]	10	60	1/4"	76	111	45	73	81
P15	270 [9.5]	200 [7.1]	900 [130]	PG20 [885]	1.65 [2.2]	10	60	1/4"	72	111	45	77	85
P17	400 [14.1]	280 [9.9]	1,000 [145]	PG29 [1,360]	2.2 [3.0]	15	60	1/4"	78	111	45	77	89
P20	420 [14.8]	320 [11.3]	900 [130]	PG30 [880]	2.4 [3.2]	15	75	1/4"	75	113	45	79	103

\* Measured per AS 4637-2006. ^ Measured @ 1 m per AS 2221.1-1979.

## Features and Benefits



### Puma Compressor Pump

Puma's traditional over-square pump design delivers high flow-rates at low pump speeds. Its full cast iron construction is built tough for reliability and long service life.



### Trade Quality

From the fully enclosed steel belt guard to the anti-block tank drain valve, each and every component is selected to withstand the rigours of day-to-day commercial trade use.



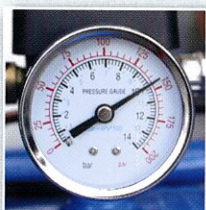
### Teco 240V Electric Motor

The heavy duty, steel frame motor has been specifically developed for Australian compressors. It's also fully copper-wound for high efficiency to use less electricity and run cooler.



### Filter Regulator

The 5 micron filter effectively removes dirt and water from the compressed air stream while the regulator provides accurate pressure control. A Nitto-style coupling is fitted to the air outlet port.



### High Operating Pressure

Choose the 10 Amp model P13 or the 15 Amp model P17 for demanding nailer applications that need a higher operating pressure range of 800 to 1,000 kPa [115 to 145 psi].



### Puncture Proof Tyres

You'll never be let down by a puncture with these solid rubber tyres mounted on heavy-duty steel wheels. The wide tread profile and ball bearing hub also allow for easy all-terrain handling.



PUMA and the PUMA WILDCAT image are registered trade marks of Puma Industrial Co., Ltd. (Taiwan).

TECO is a registered trade mark of Teco Electric & Machinery Co., Ltd. (Taiwan).



AUTHORIZED PUMA DEALER:



www.puma-air.com.au